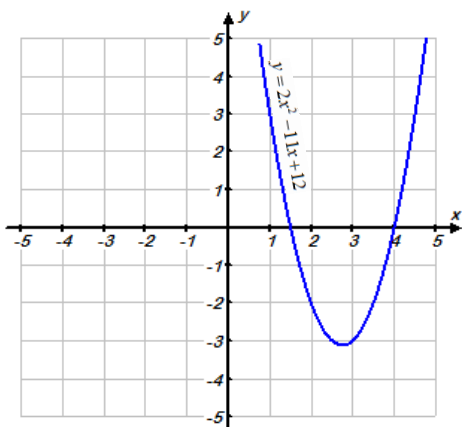


Section 5-6

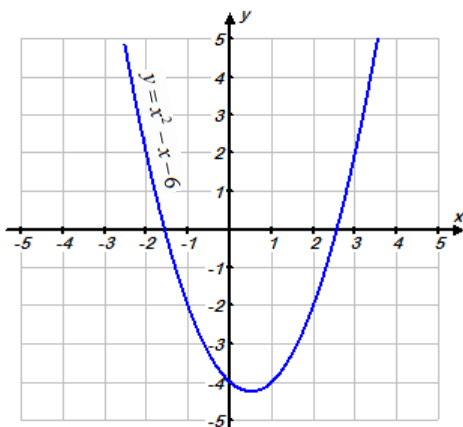
Name: _____

1. Use the graphs to solve the following:

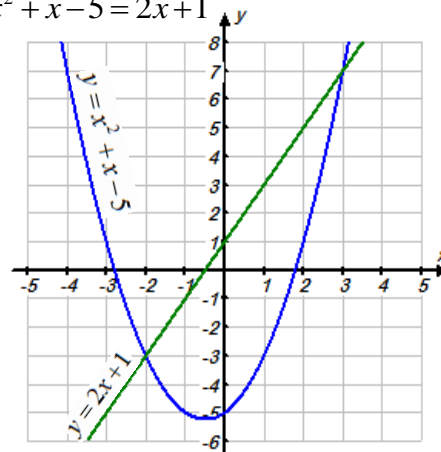
a. $2x^2 - 11x + 12 = 0$



b. $x^2 - 1x - 6 = 2$



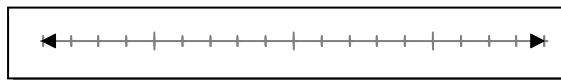
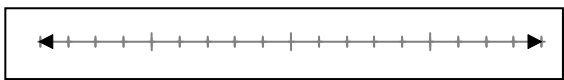
c. $x^2 + x - 5 = 2x + 1$



1. Solve the following quadratic inequalities in one variable:

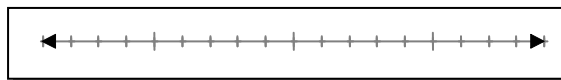
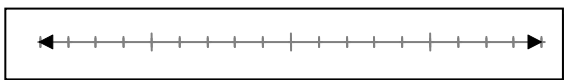
a. $x^2 + 3x - 10 > 0$

b. $-x^2 + 1x + 12 \geq 0$



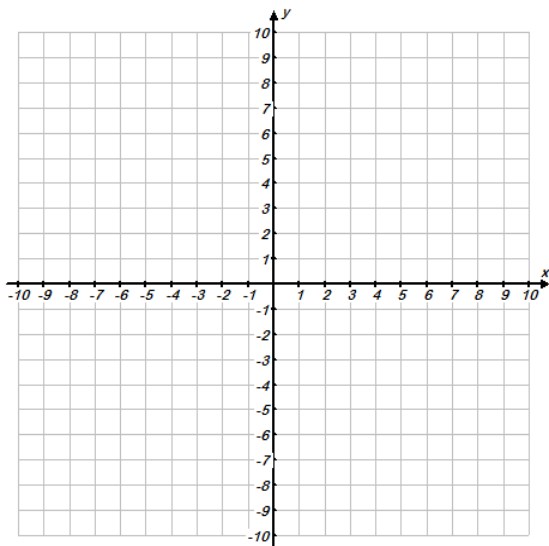
c. $3x^2 + 2x - 8 \leq 0$

d. $-\frac{1}{2}x^2 + 7x - 24 > 0$

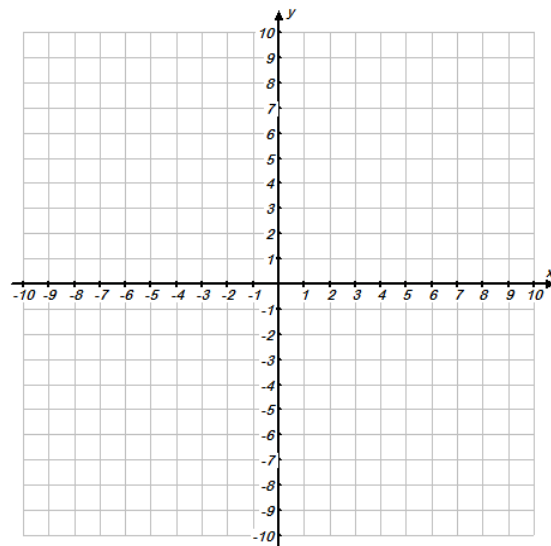


2. Solve the following quadratic inequalities in two variables (rewrite in vertex form first):

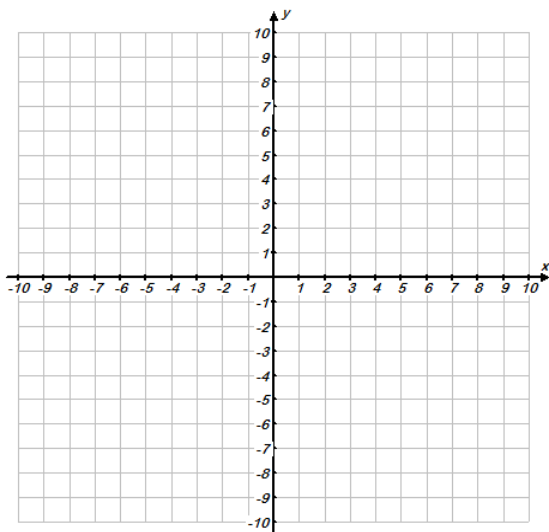
a. $y \geq x^2 + 6x + 5$



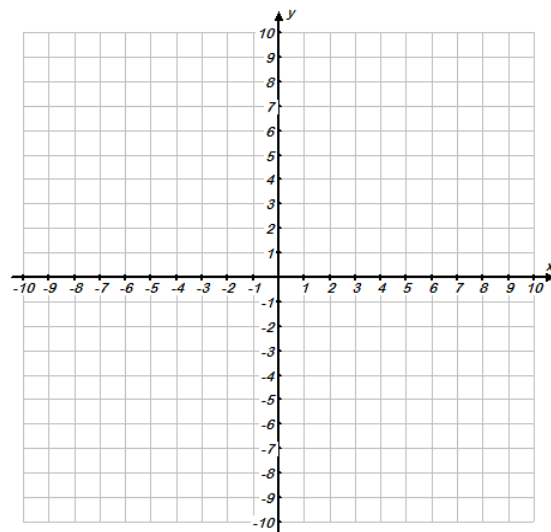
b. $y < -2x^2 + 8x - 14$



c. $y \geq -x^2 + 7x - 8$



d. $y \geq \frac{1}{2}x^2 + 6x + 14$



3. Matching.

___ **a.** $y \geq x^2 - 2x + 4$

___ **b.** $y > -\frac{1}{2}x^2 + x + 3$

___ **c.** $y < 5x^2 - 10x - 3$

___ **d.** $y \leq -x^2 + 8x - 9$

